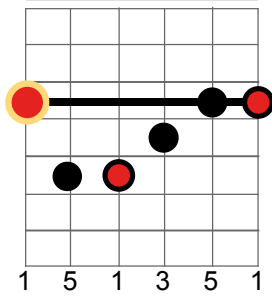


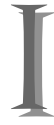
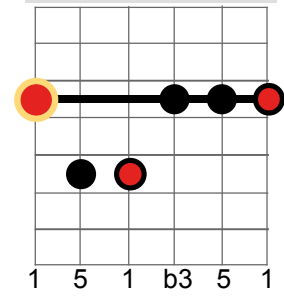
Dreiklänge: Dur- u. Moll-Akkorde in den 5 Fingersätzen

- absolute Fingersätze in Barré-Technik -

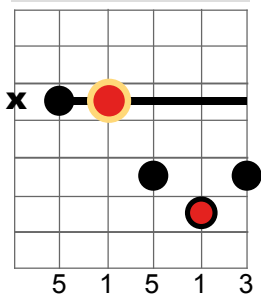
Dur Akkord - Typ I (E-Form)



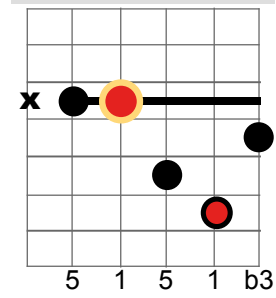
Moll Akkord - Typ I (Em-Form)



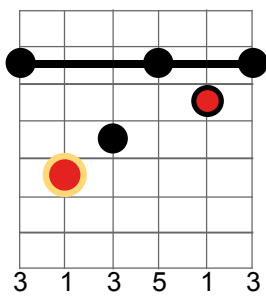
Dur Akkord - Typ II (D-Form)



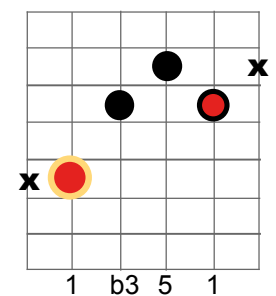
Moll Akkord - Typ II (Dm-Form)



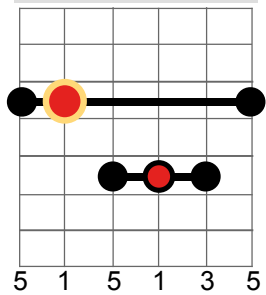
Dur Akkord - Typ III (C-Form)



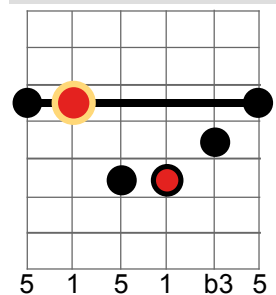
Moll Akkord - Typ III (Cm-Form)



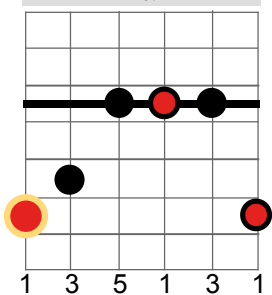
Dur Akkord - Typ IV (A-Form)



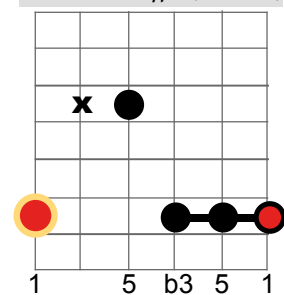
Moll Akkord - Typ IV (Am-Form)



Dur Akkord - Typ V (G-Form)



Moll Akkord - Typ V (Gm-Form)



 = empfohlener tiefster (Grund-)Ton im Akkord