

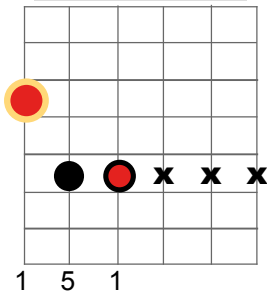
# Der "Power-Akkord" u. dazugehörige Dreiklänge

- absolute Fingersätze in Barré-Technik -

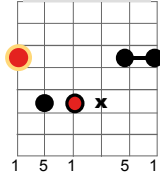
 = empfohlener tiefster (Grund-)Ton im Akkord

I

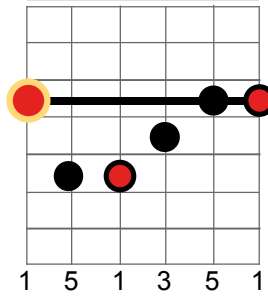
5 Akkord - Typ I (E-Form)



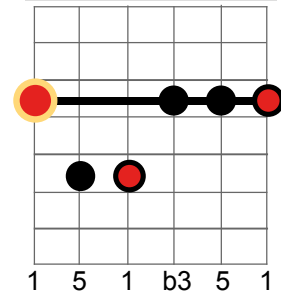
5 Akkord - Typ I (E-Form)



Dur Akkord - Typ I (E-Form)

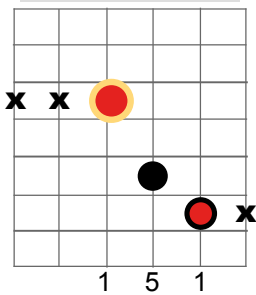


Moll Akkord - Typ I (Em-Form)

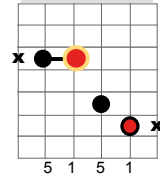


II

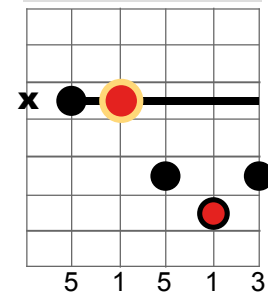
5 Akkord - Typ II (D-Form)



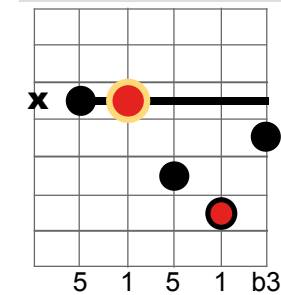
5 Akkord - Typ II (D-Form)



Dur Akkord - Typ II (D-Form)



Moll Akkord - Typ II (Dm-Form)

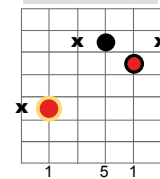


III

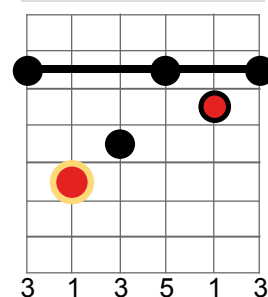
5 Akkord - Typ III (C-Form)



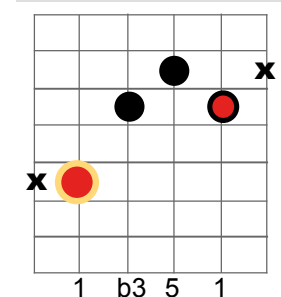
5 Akkord - Typ III (C-Form)



Dur Akkord - Typ III (C-Form)

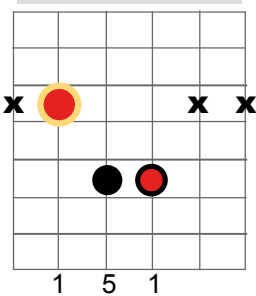


Moll Akkord - Typ III (Cm-Form)

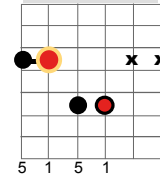


IV

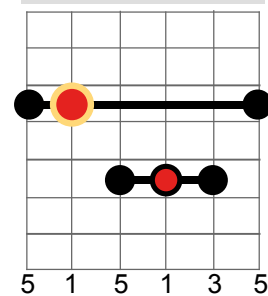
5 Akkord - Typ IV (A-Form)



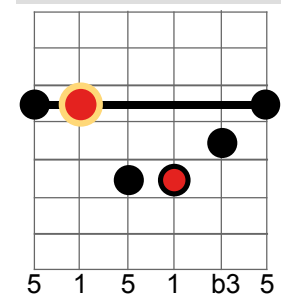
5 Akkord - Typ IV (A-Form)



Dur Akkord - Typ IV (A-Form)

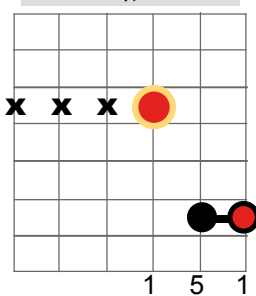


Moll Akkord - Typ IV (Am-Form)

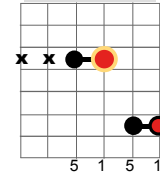


V

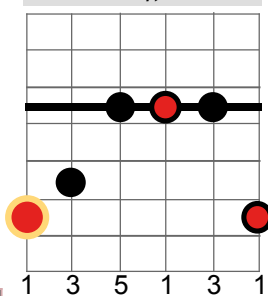
5 Akkord - Typ V (G-Form)



5 Akkord - Typ V (G-Form)



Dur Akkord - Typ V (G-Form)



Moll Akkord - Typ V (Gm-Form)

