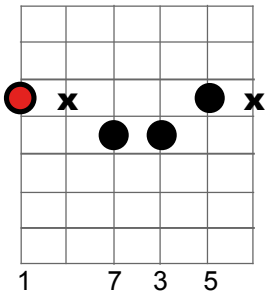


Vierklänge: Dur-Akkorde in den 5 Fingersätzen

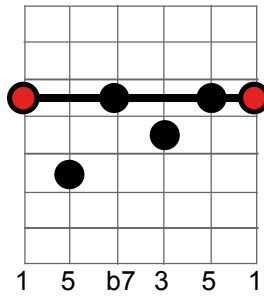
- absolute Fingersätze für maj7, 7, 7b5 -

I

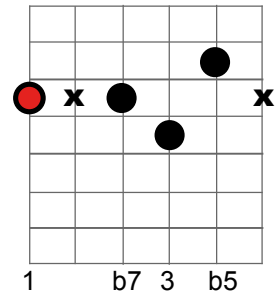
maj7 Akkord - Typ I (E-Form)



7 Akkord - Typ I (E-Form)

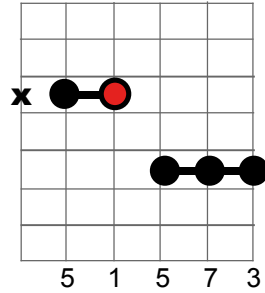


7b5 Akkord - Typ I (E-Form)

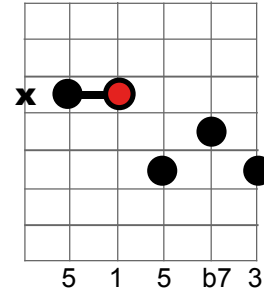


II

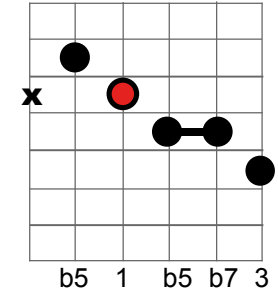
maj7 Akkord - Typ II (D-Form)



7 Akkord - Typ II (D-Form)

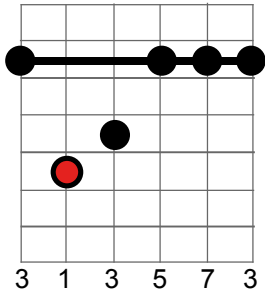


7b5 Akkord - Typ II (D-Form)

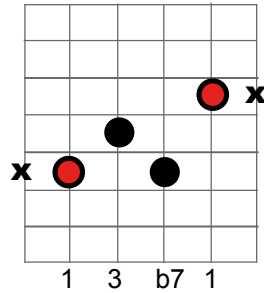


III

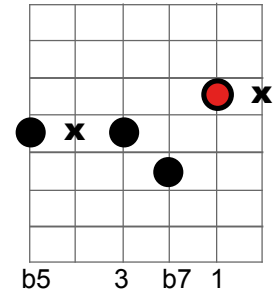
maj7 Akkord - Typ III (C-Form)



7 Akkord - Typ III (C-Form)

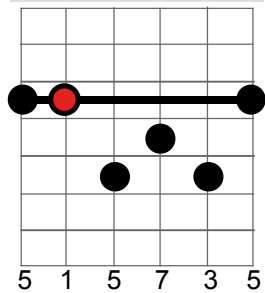


7b5 Akkord - Typ III (C-Form)

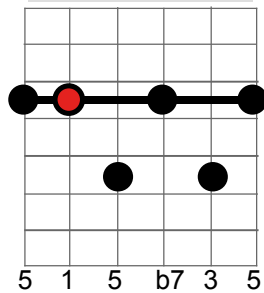


IV

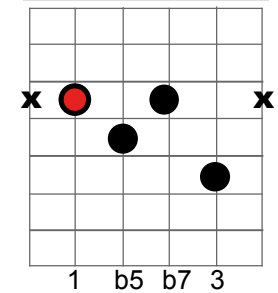
maj7 Akkord - Typ IV (A-Form)



7 Akkord - Typ IV (A-Form)

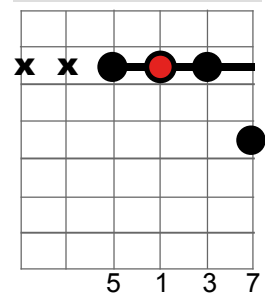


7b5 Akkord - Typ IV (A-Form)

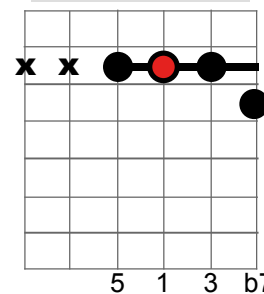


V

maj7 Akkord - Typ V (G-Form)



7 Akkord - Typ V (G-Form)



7b5 Akkord - Typ V (G-Form)

