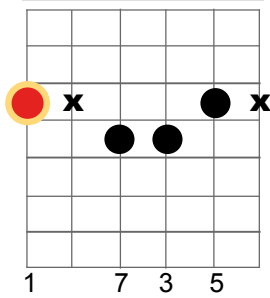


# Vierklänge: Dur- u. Moll-Akkorde in den 5 Fingersätzen

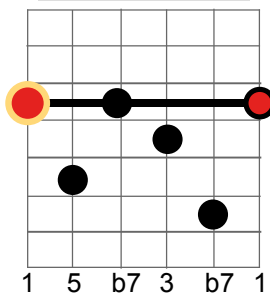
- absolute Fingersätze für maj7, 7, m7 -

I

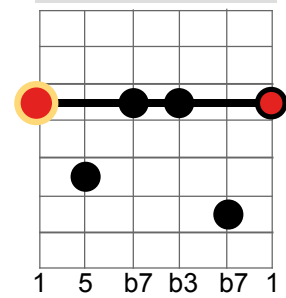
maj7 Akkord - Typ I (E-Form)



7 Akkord - Typ I (E-Form)

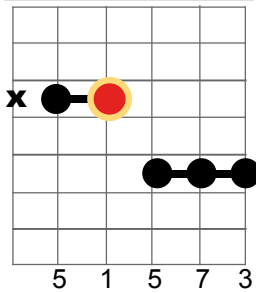


m7 Akkord - Typ I (Em-Form)

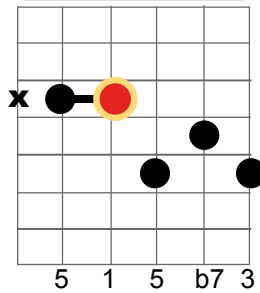


II

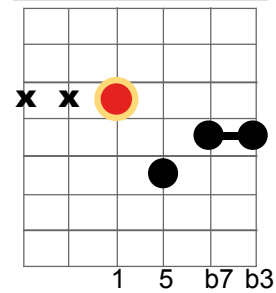
maj7 Akkord - Typ II (D-Form)



7 Akkord - Typ II (D-Form)

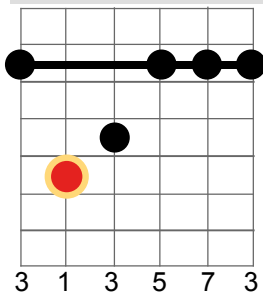


m7 Akkord - Typ II (Dm-Form)

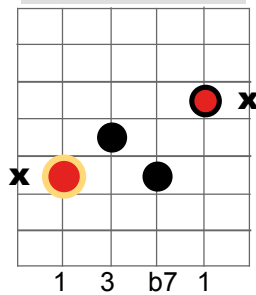


III

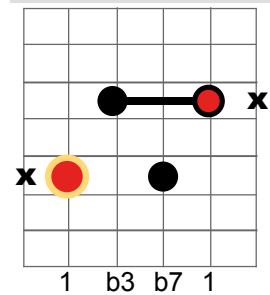
maj7 Akkord - Typ III (C-Form)



7 Akkord - Typ III (C-Form)

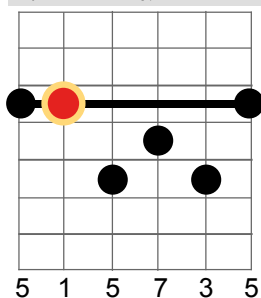


m7 Akkord - Typ III (Cm-Form)

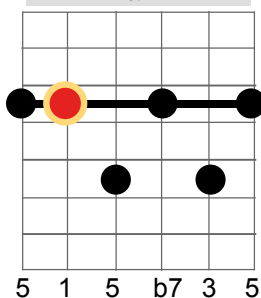


IV

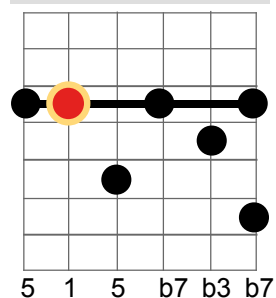
maj7 Akkord - Typ IV (A-Form)



7 Akkord - Typ IV (A-Form)

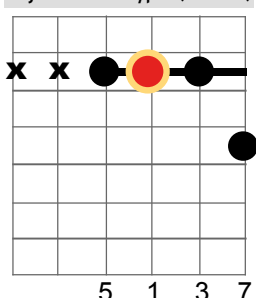


m7 Akkord - Typ IV (Am-Form)

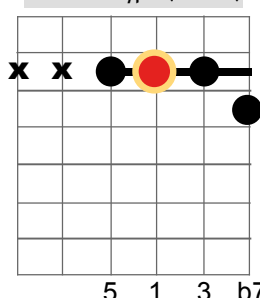


V

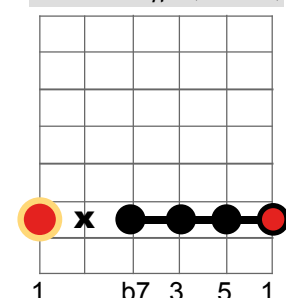
maj7 Akkord - Typ V (G-Form)



7 Akkord - Typ V (G-Form)



m7 Akkord - Typ V (Gm-Form)



 = empfohlener tiefster (Grund-)Ton im Akkord