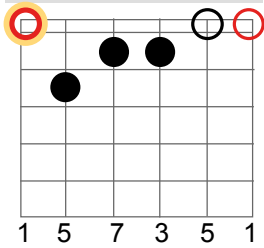


Vierklänge: Dur- u. Moll-Akkorde in den 5 Fingersätzen

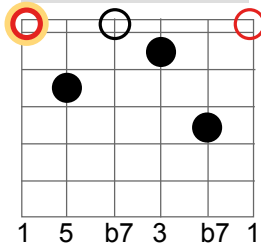
- Fingersätze im Leersaitenbereich für maj7, 7, m7/mit Intervallbeifferung -

I

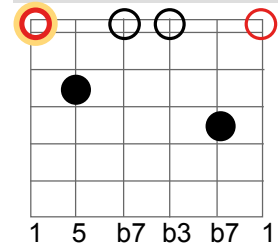
E maj7 Akkord - Typ I (E-Form)



E 7 Akkord - Typ I (E-Form)

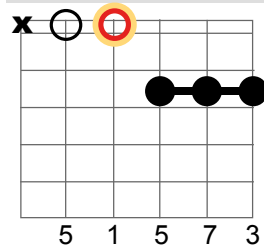


E m7 Akkord - Typ III (Em-Form)

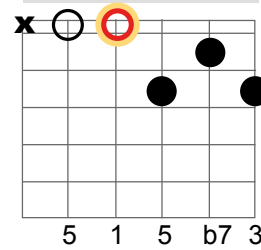


II

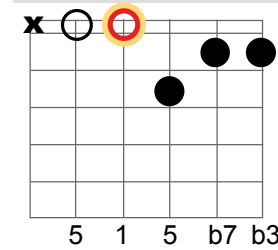
D maj7 Akkord - Typ II (D-Form)



D 7 Akkord - Typ II (D-Form)

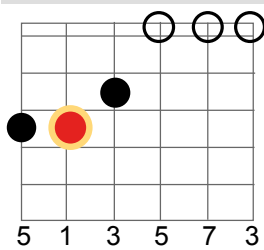


D m7 Akkord - Typ II (Dm-Form)

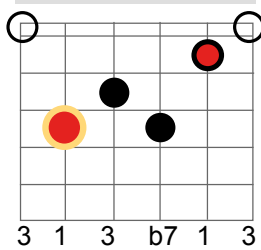


III

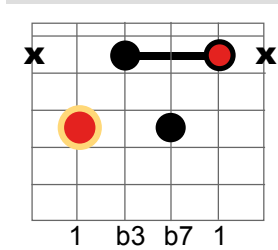
C maj7 Akkord - Typ III (C-Form)



C 7 Akkord - Typ III (C-Form)

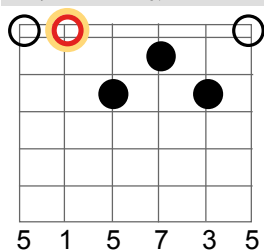


C m7 Akkord - Typ III (Cm-Form)

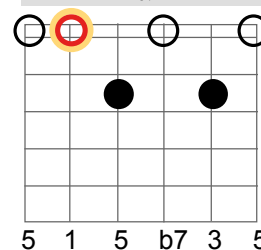


IV

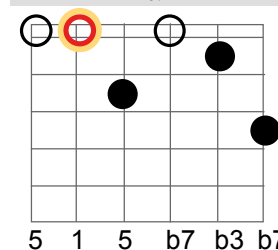
A maj7 Akkord - Typ IV (A-Form)



A 7 Akkord - Typ IV (A-Form)

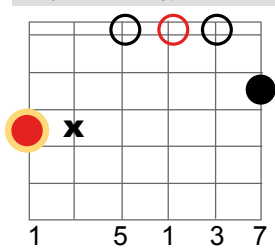


A m7 Akkord - Typ IV (Am-Form)

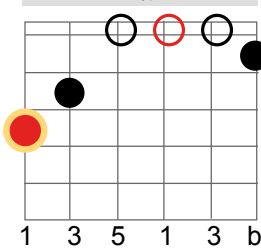


V

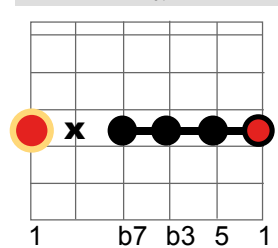
G maj7 Akkord - Typ V (G-Form)





G 7 Akkord - Typ V (G-Form)



G m7 Akkord - Typ V (Gm-Form)



  = empfohlener tiefster (Grund-)Ton im Akkord