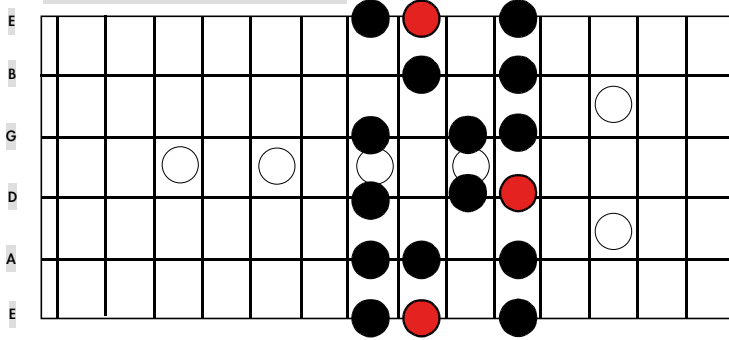


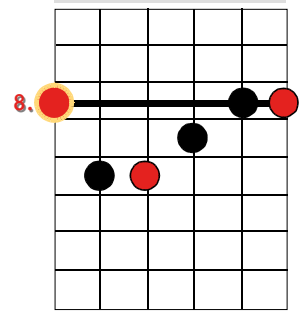
# HEPTATONIK

- Die Fingersätze der Siebentonleiter am Beispiel der Tonart C Dur(ionisch) -

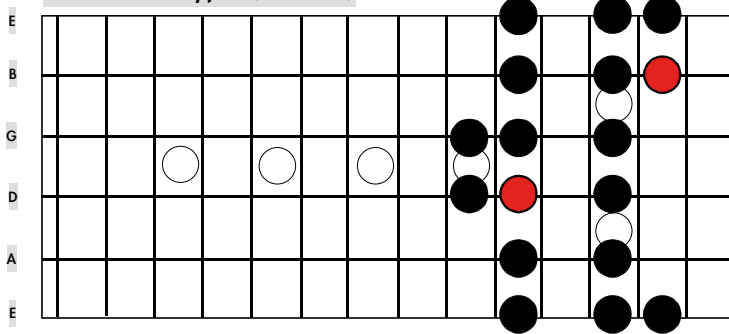
Dur-Skalen Typ I (E-Form)



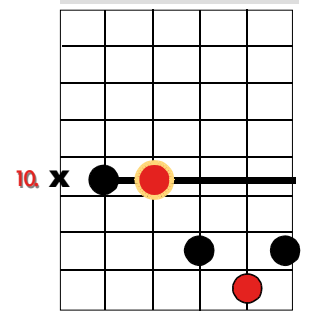
Dur Akkord - Typ I (E-Form)



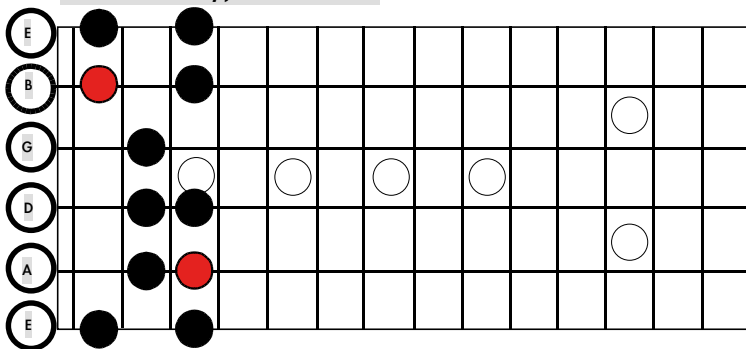
Dur-Skalen Typ II (D-Form)



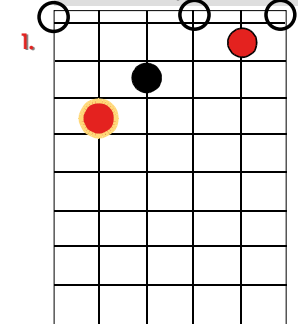
Dur Akkord - Typ II (D-Form)



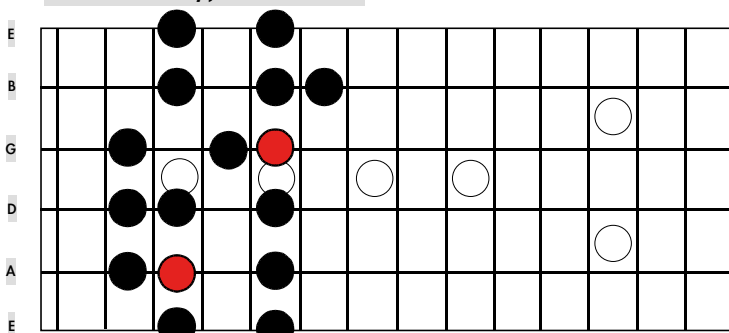
Dur-Skalen Typ III (C-Form)



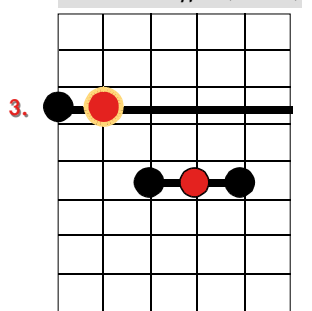
Dur Akkord - Typ III (C-Form)



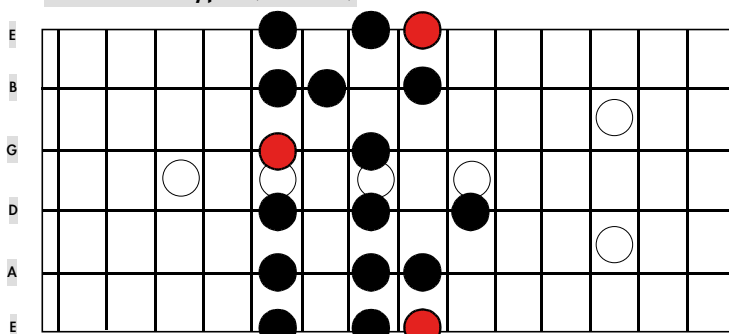
Dur-Skalen Typ IV (A-Form)



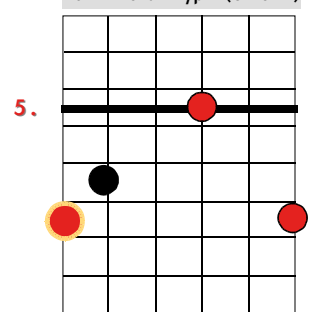
Dur Akkord - Typ IV (A-Form)



Dur-Skalen Typ V (G-Form)



Dur Akkord - Typ V (G-Form)



I

II

III

IV

V

● = empfohlener tiefster (Grund-)Ton im Akkord