

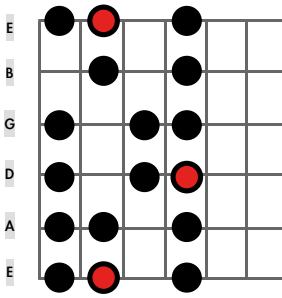
HEPTATONIK

Dur (ionisch)

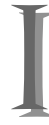
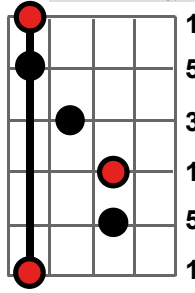
- Die Siebentonleiter in absoluten Fingersätzen -

reines **Moll** (äolisch)

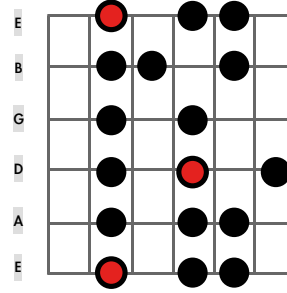
Dur-Skalen Typ I (E-Form)



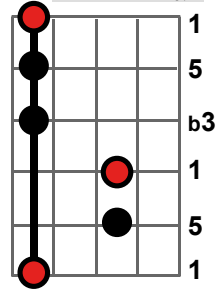
Dur-Akkord Typ I



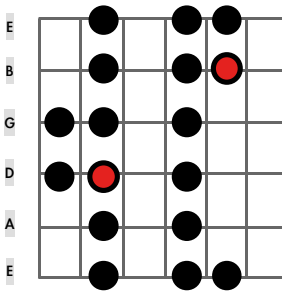
Moll-Skalen Typ I (Em-Form)



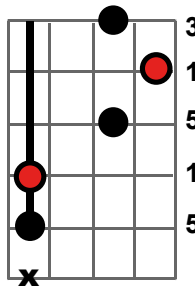
Moll-Akkord Typ I



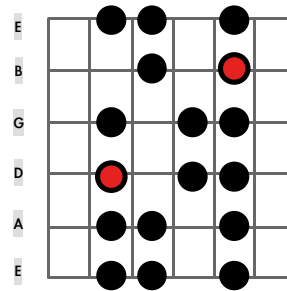
Dur-Skalen Typ II (D-Form)



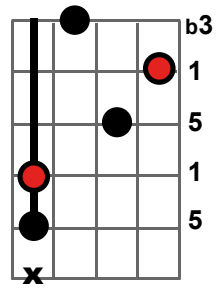
Dur-Akkord Typ II



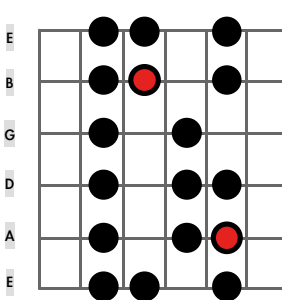
Moll-Skalen Typ II (Dm-Form)



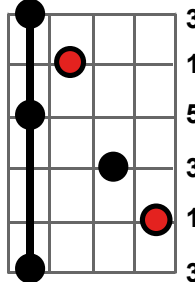
Moll-Akkord Typ II



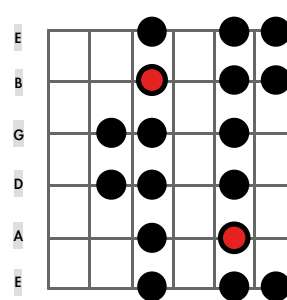
Dur-Skalen Typ III (C-Form)



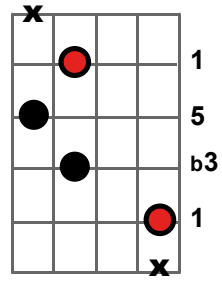
Dur-Akkord Typ III



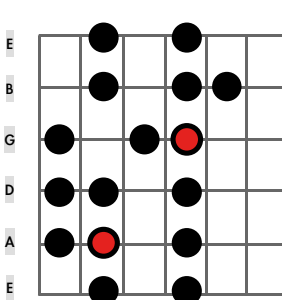
Moll-Skalen Typ III (Cm-Form)



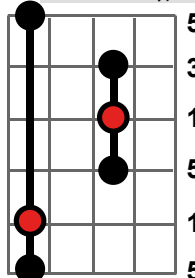
Moll-Akkord Typ III



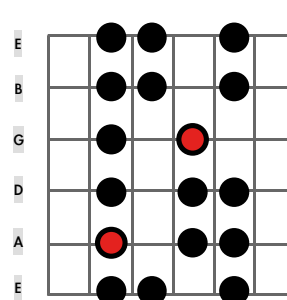
Dur-Skalen Typ IV (A-Form)



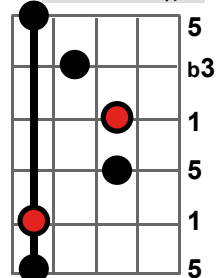
Dur-Akkord Typ IV



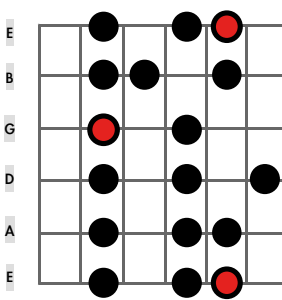
Moll-Skalen Typ IV (Am-Form)



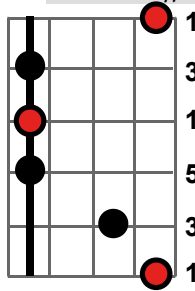
Moll-Akkord Typ IV



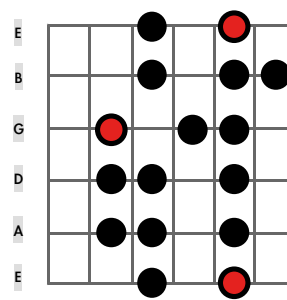
Dur-Skalen Typ V (G-Form)



Dur-Akkord Typ V



Moll-Skalen Typ V (Gm-Form)



Moll-Akkord Typ V

